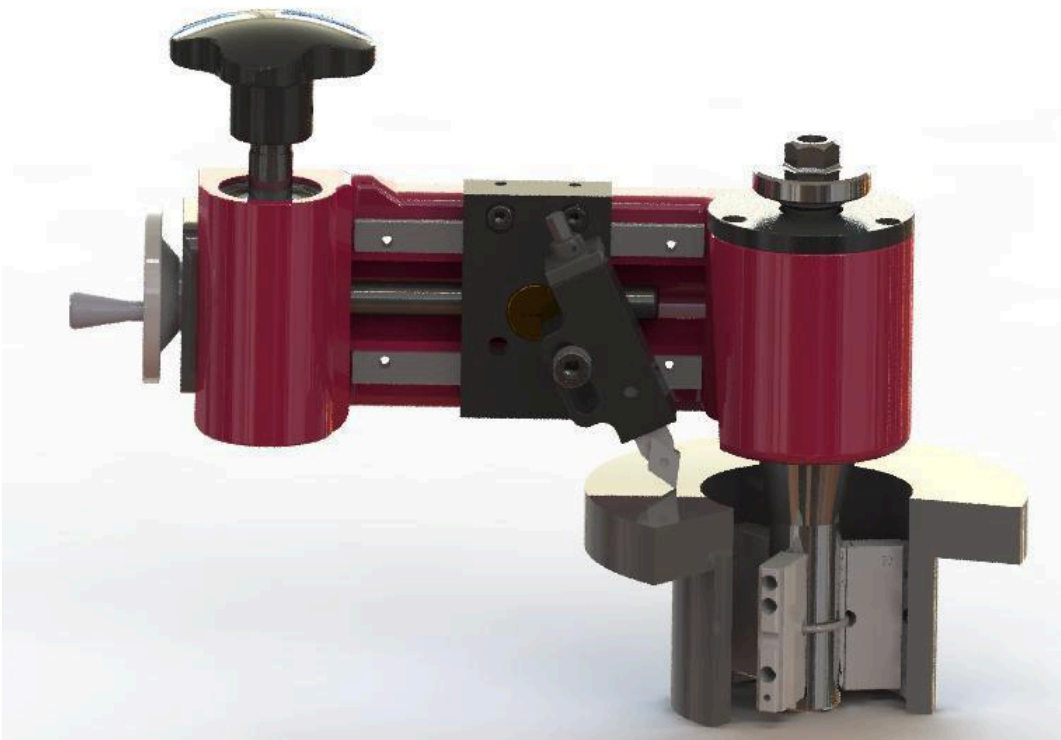




# SMG F350 Portable Flange Facing Machine

## Operator's Manual



# Catalogue

1. Notes
2. Description
3. Operational Process
4. SMG F350 Size
5. Packing list

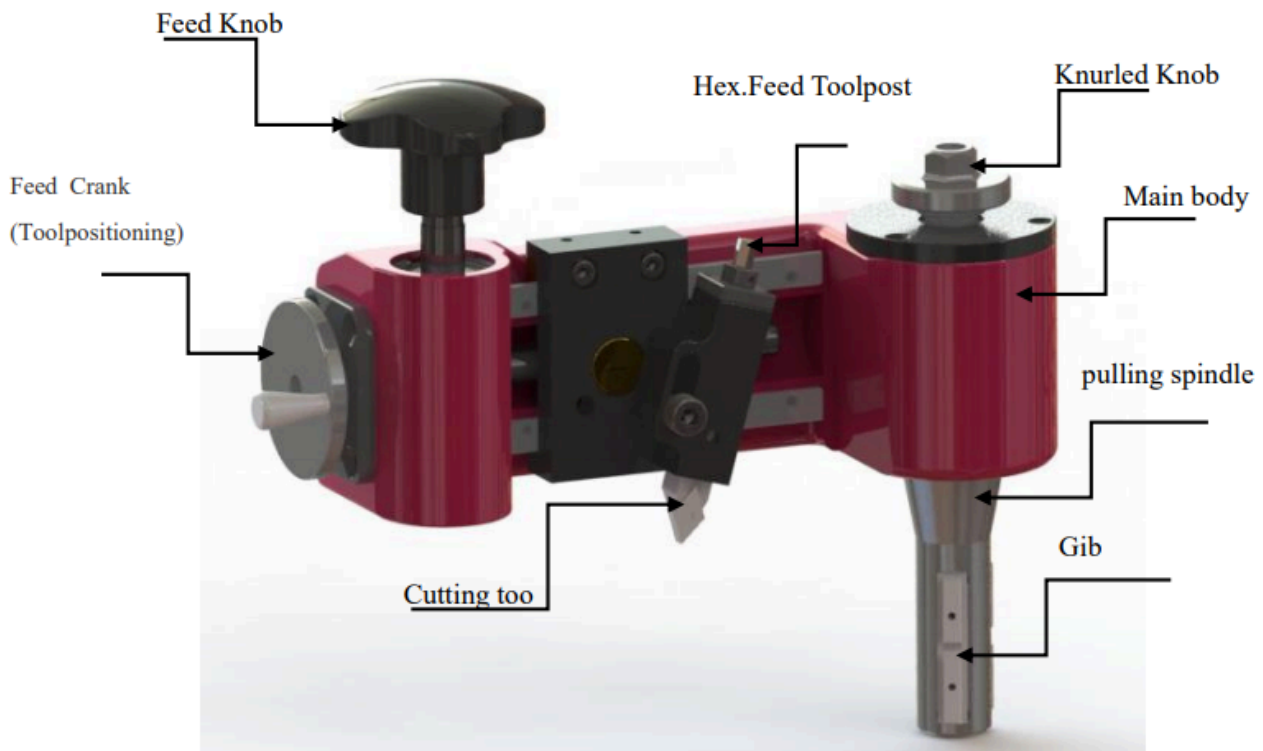
# 1. Notes

Before using the machine, you must carefully read the instructions, and packing list to inventory items, understand the operational safety precautions, machine performance and use of norms.

- 1.1. The operator must accept the safe operation training.
- 1.2. Before the operation, must wear working clothes and protective glasses.
- 1.3. At working, ensure that the chuck is always firmly tightened.
- 1.4. After working, remove the oil on the machine, iron cut, in the cone and cone parts of the sets of anti-rust oil spray.
- 1.5. Should be based on maintenance manual requirements, good equipment protection

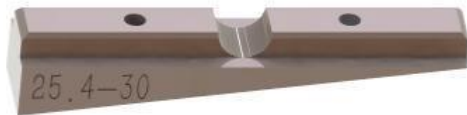
# 2. Description

SMG F350 is a manual drive flange facing repair machine.



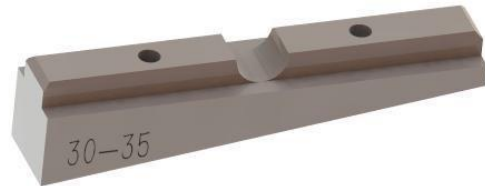
2.1. SMG F350 Flange machine has two feeding options, one to the flange smooth, another vehicle water lines. Feed rod can be manually exchanged, according to the need to select the required Feed rod and nut. Selection of 1 wire water tank line, Feed rod 2 car smooth.

2.2. According to different flange hole selection of different block and gib



Gib 1

Gib-1 The applicable range is 25.4-30mm



Gib 2

Gib-2 The applicable range is 30-35m

5 different size blocks: 5mm, 10mm, 20mm, 50mm, 100 mm

Select the desired block of rise depending on the flange diameter

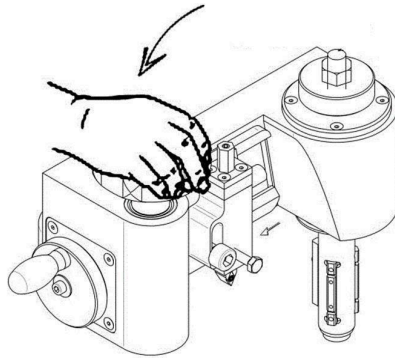


2.3 Processing range 25.4-350mm diameter flange

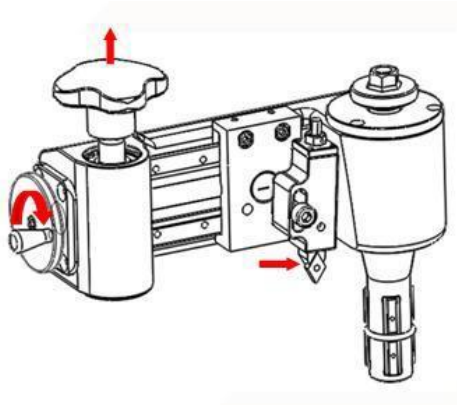
2.4 Counterclockwise is the right work way

### 3. Operational Process

1. According to the processing requirements to select the Feed rod, install the Feed rod.
2. Measure the required flange hole, according to the hole diameter and select the gib and block.
3. Insert the conical sleeve into the flange, pull the anchor by pulling the bolt, Fixed flange machine, lock with a wrench.
4. Install the cutter head and cutter.
5. Rotate the handle to lift the worm and worm gear, shake the Feed rod hand wheel, Place the tool holder in the machining area and adjust the turning angle.
6. Return the rotary lever to start the work.
7. After processing, loosen the tightening bolts, remove the chuck and angle, clean up the iron filings, Into the toolbox.

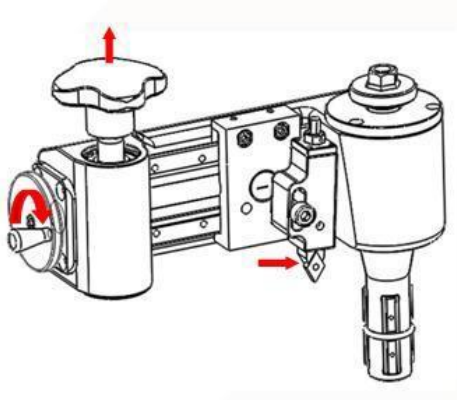


## How to change Feed rod?

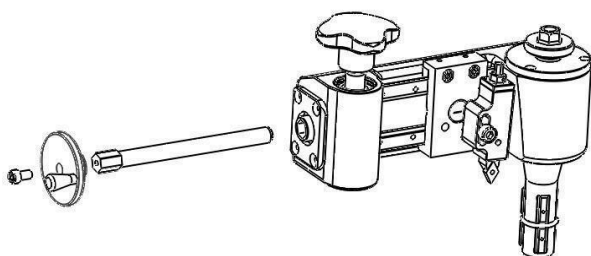


### Step 1

Take up the Feed Knob, turn on the feed crank, Put the cutter head at end right side , make feed rod out off with nut



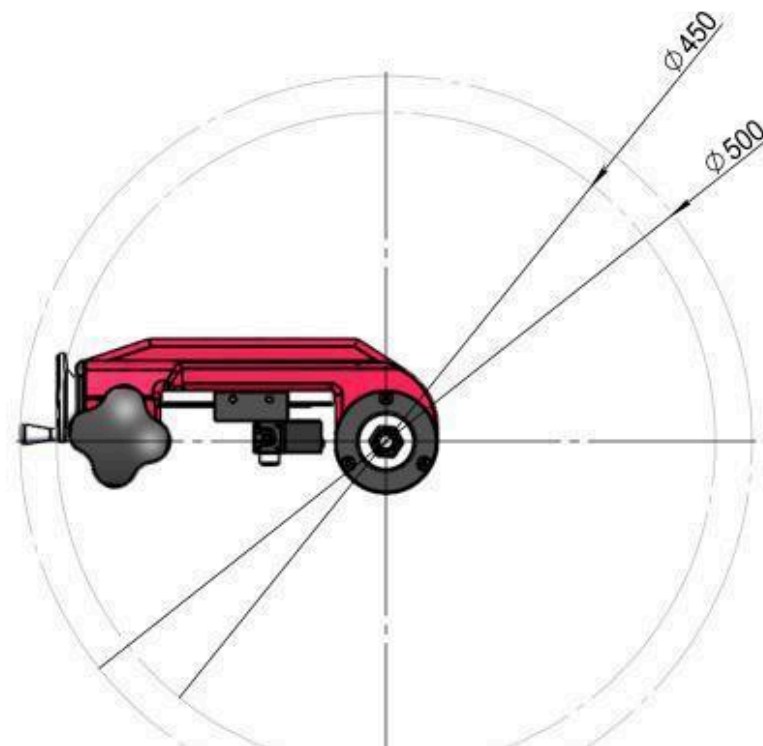
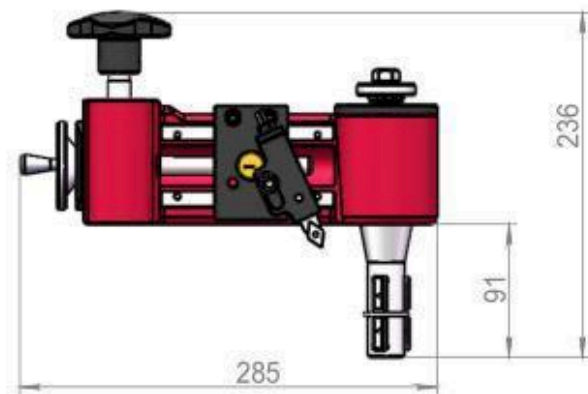
### Step 2



### Step 3

Take out the feed rod and change other feed rod

#### 4. SMG F350 Size



## 5. Packing list

No.	Items	Qty
1	Main body	1 set
2	Feed rod and nut	2 set
3	Gib 1	3 pcs
4	Gib 2	3 pcs
5	5mm Block	3 pcs
6	10mm Block	3 pcs
7	20mm Block	6 pcs
8	50mm Block	3 pcs
9	100mm Block	3 pcs
10	Cutter head	1 set
11	Cutter	1 pcs
12	Tools	1 set
13	Tension spring	2 pcs
14	Packing Box	1 set