

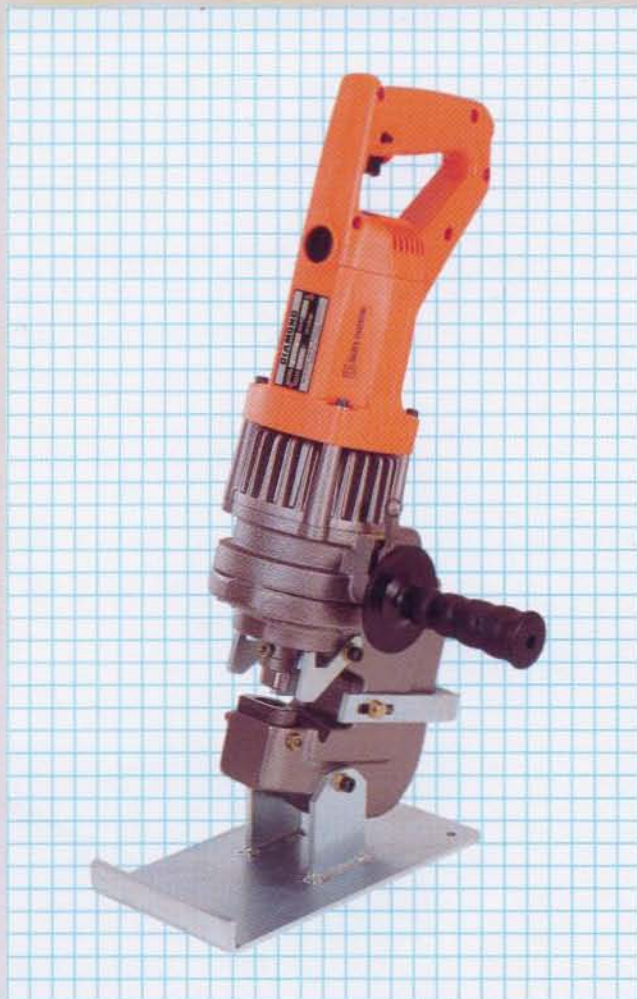
PRODUCT GUIDE

DIAMOND

HANDY PUNCHER

EP-19V EP-2110V

HYDRAULIC PUNCHER



EP-19V



EP-2110V

PUNCH / DIE SIZES & MAXIMUM MATERIAL THICKNESSES

ROUND HOLES

ROUND HOLES		RANGE A				RANGE B								
Diameter		3.4	4.2	5.0	5.5	6.0	6.5	8.0	8.5	10	11	12	13	14
Max. thickness	Fe, Al	1.6	2.3	3.2	4.0	6								
	Stainless	—	—	—	—	3	4	5						

		RANGE C						RANGE D								
Diameter		15	16	17	18	18.5	19	10	11	13	14	15	17	18	19	21
Max. thickness	Fe, Al	6						6	9	10						
	Stainless	5						6								

ELLIPTICAL HOLES

ELLIPTICAL HOLES		RANGE E						RANGE F					
Size		8.5×10	6.5×13	8.5×13	9×13.5	10×15	11×16.5	8.5×17	9×18	10×20	12×18	14×19.5	14×21
Max. thickness Fe, Al		6						6					

		RANGE G								
Size		9×13.5	9×16	10×15	10×18	11×16.5	13×19	14×19.5	16.5×20	18.2×22
Max. thickness Fe, Al		6		9				10		

N.B. (1) Punch / die sets of other sizes available on request
 (2) Die nomenclature includes an A or B prefix (SA or SB for stainless steel) indicative of material thickness.
CONSULT WITH YOUR DEALER BEFORE ORDERING

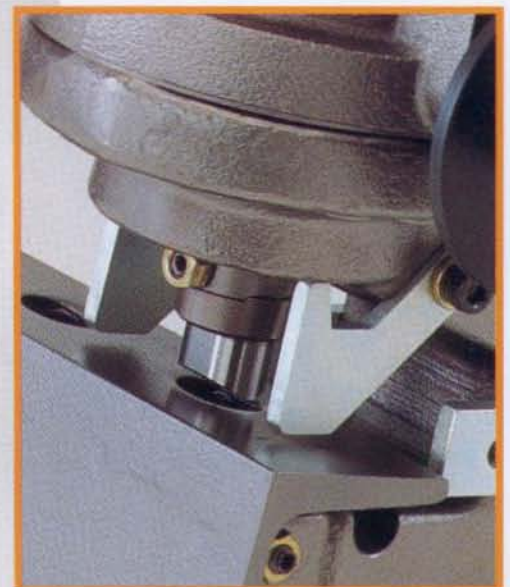
EP-19V

Our mid-sized model with a throat depth of 55 mm.

Suitable for channel bars as well as flat and angle bars.

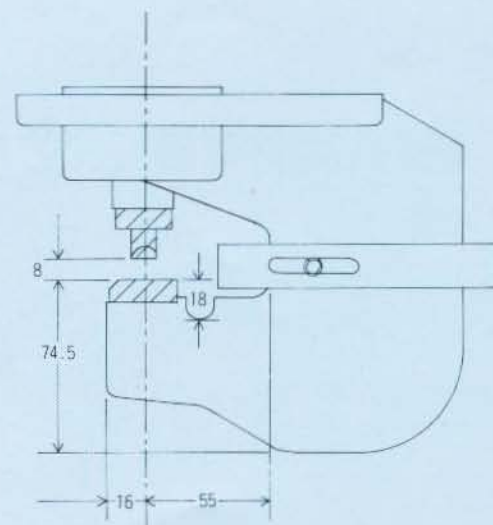
Covers punch/die ranges B, C, E, F

Comes with 11mm ϕ punch & die set, side handle, tool kit, stand and steel carrying case.



Max. hold size	round	19 mm ϕ
	elliptical	14 \times 21 mm
Max. material thickness	Fe. Al.	6 mm
	stainless	5 mm
Throat depth		55.0 mm
Power supply		AC 115 V / 220 V / 240 V
Dimensions	※	133 \times 195 \times 484 mm
Weight	※	14.5 Kg

※ excluding side handle & stand



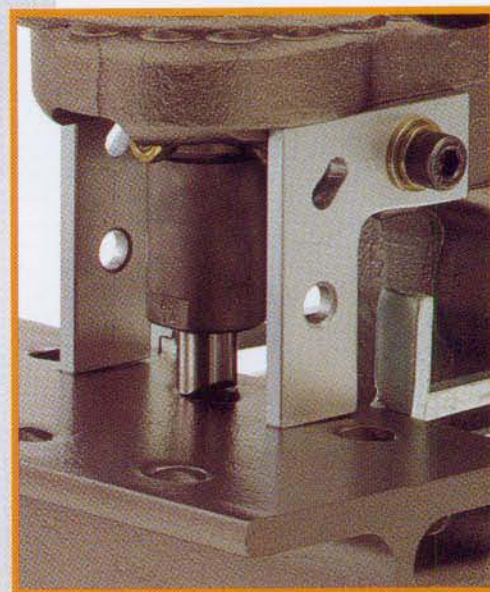
EP-2110V

Heavy duty model for bars up to 10mm thick. Ideal for all popular bar configurations including H beams.

Punch/die sets are available in three series (AH, WH & W) to accommodate channel bars and H beams of widely differing dimensions.

Covers punch/die ranges D, G

Comes with 14mm ϕ punch & die set, sidehandle, tool kit, stand and steel carrying case.



Max. hole size	round	21 mm ϕ
	elliptical	18.2 \times 22 mm
Max. material thickness	Fe. Al.	10 mm
	stainless	6 mm
Throat depth		65.0 mm
Power supply	AC 115 V / 220 V / 240 V	
Dimensions	※	138 \times 217 \times 554 mm
Weight	※	21.2 Kg

※ excluding side handle & stand

