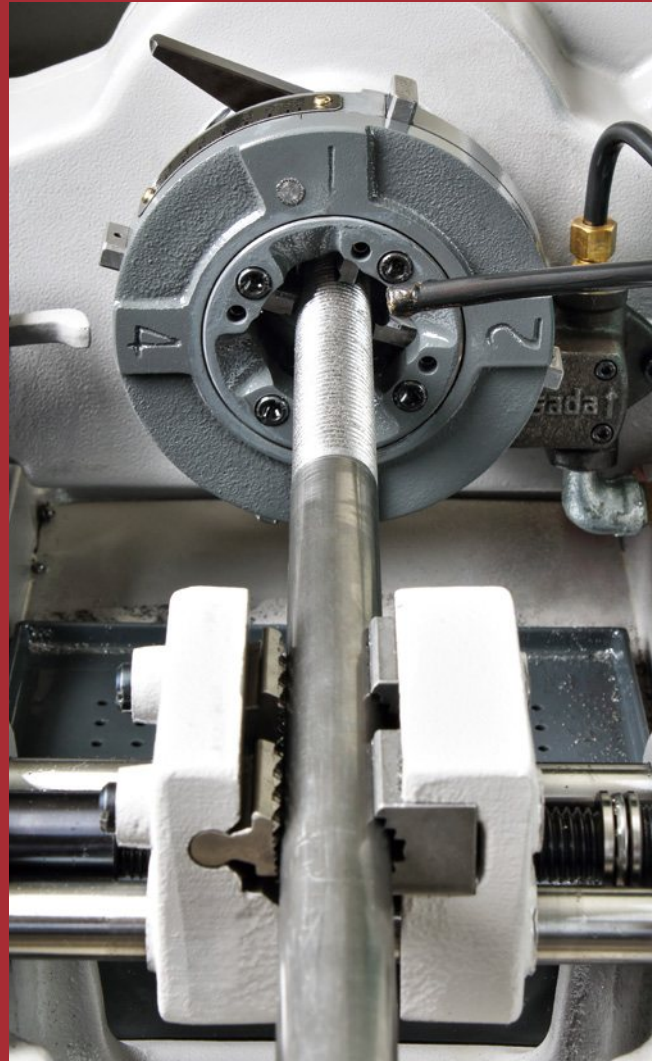
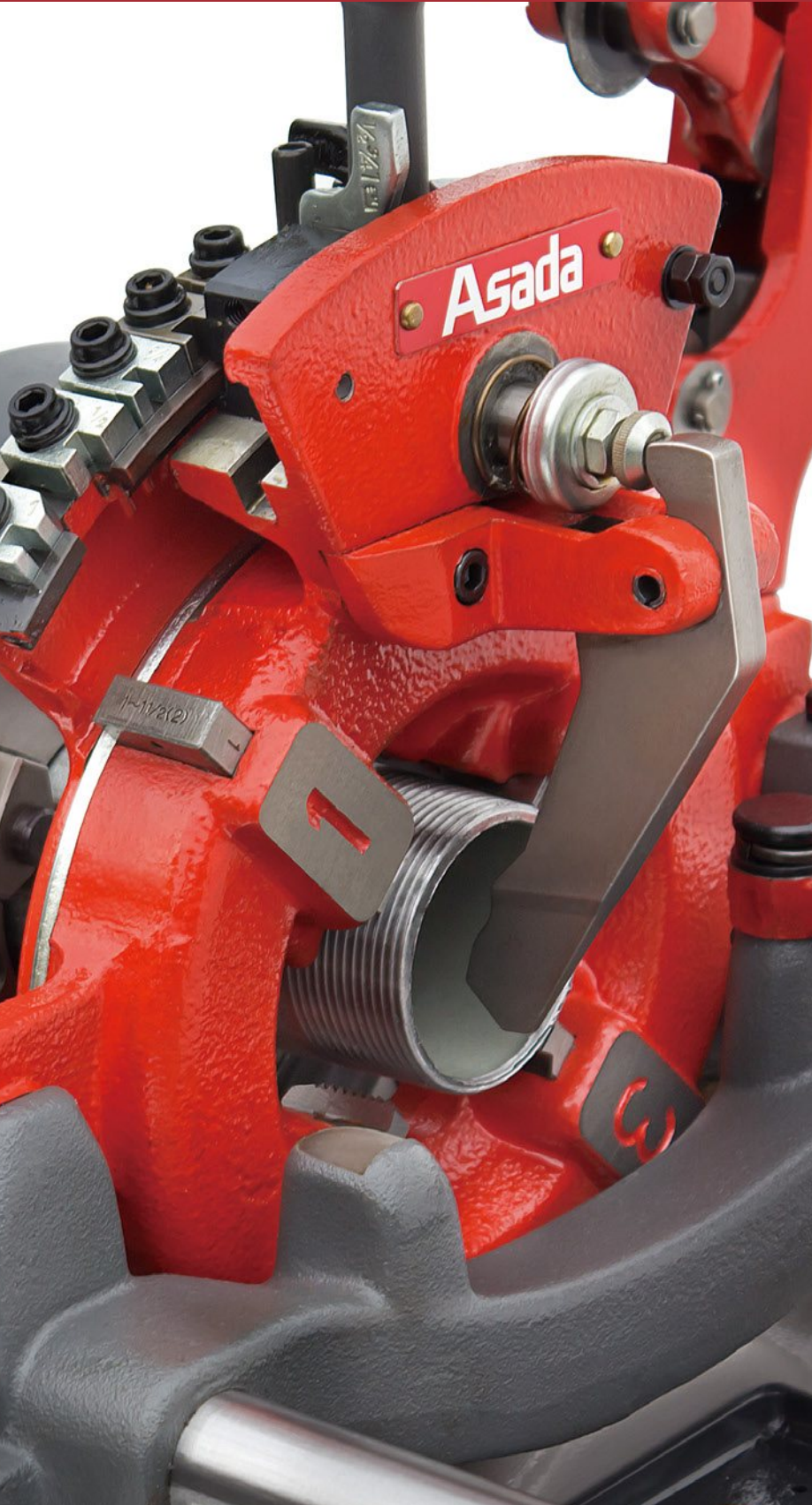


THREADING MACHINES



**Durable threading for
high pressure and airtight
threading !!**

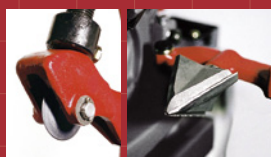
BEAVER SERIES

For Water, Gas, Electricity pipe,
Stainless steel pipes threading,
and also for Bolt threading.



Die-Head & Dies

- Die-Head equipped with automatic profiling system and designed to reduce cut resistance for precise threads. Dies made of special pre-heat treated steel, ensuring long life and easy threading.



Cutter & Reamer blade

- Designed for Beaver series, with the most suitable shaped blade tip allows sharp cut and durability.



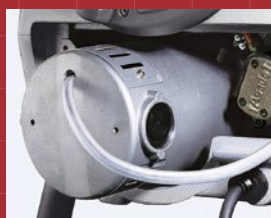
Hammer chuck

- Outer ring designed to grip easily and to grab pipes firmly with less power. The Jaw Body is wider giving greater load capacity and durability. Jaw Insert improves the centripetal clamping feature.



Spindle support

- Spindle is supported by Sealed Ball Bearing, ensuring correct alignment and continued accuracy through lack of wear.



Powerful electric motor

- Class F insulation grade on the motor allows continuous operation. More than sufficient Horse Power: Beaver 50-750W, Beaver 80 & 100-1,140W.



Cutting oil pump

- The high capacity of Gear Pump operates even at low revolutions to assure precise threads.

For Water, Gas, Electricity Pipe, and Bolt threading

Beaver 25

Code No. **BE25B**

1/4" ~ 1"

Optional item Water/Gas pipe: 1/4 ~ 3/8"
Bolt : 3/8 ~ 1" • 10 ~ 24mm
Conduit : 19 ~ 39mm • 1/2 ~ 1"

**EASY TO CARRY!
HIGH POWER !!**



Weight	Spindle Speed	Motor	Standard Accessories
19kg	52min ⁻¹	350W voltage made to order	Auto Die-Head: 1/2 ~ 1" Dies: AM 1/2 ~ 3/4", AM 1 ~ 1 1/2" Threading Oil White 1L (1can)

For Water, Gas, Electricity Pipe, and Bolt threading

Beaver 80

80: Code No. **BE800**

80AT: Code No. **BE8AT**

1/4" ~ 3"

Optional item Water/Gas pipe: 1/4 ~ 3/8"
Bolt : 3/8 ~ 2" • 10 ~ 36mm
Conduit : 19 ~ 75mm • 1/2 ~ 1"

Powerful motor 1140W !!



Item	Weight	Spindle Speed	Motor	Standard Accessories
80	74kg	33min ⁻¹	1,140W voltage made to order	Manual Die-Head: 1/2 ~ 2", 2 ~ 3" Dies: BE 1/2 ~ 3/4" • BE 1 ~ 1 1/2" (2"), PT 2 ~ 3" Threading Oil White 4L (1can)
80AT				Beaver Auto Die-Head: 1/2 ~ 2" • 2 1/2 ~ 3" Dies: BE 1/2 ~ 3/4" • BE 1 ~ 1 1/2" (2"), AT 2 1/2 ~ 3" Threading Oil White 4L (1can)

For Water, Gas, Electricity Pipe, and Bolt threading

Beaver 50

50 : Code No. **BE511**

50AT : Code No. **BE5AT**

1/4" ~ 2"

Optional item Water/Gas pipe: 1/4 ~ 3/8"
Bolt : 3/8 ~ 2" • 10 ~ 36mm
Conduit : 19 ~ 51mm • 1/2 ~ 1"

BEST SELLER !!


Item	Weight	Spindle Speed	Motor	Standard Accessories
50	44kg	40min ⁻¹	750W voltage made to order	Manual Die - Head : 1/2 ~ 2" Dies : BE 1/2 ~ 3/4" • BE 1 ~ 1 1/2" (2") Threading oil White 4L (1can)
50AT				Beaver Auto Die - Head : 1/2 ~ 2" Dies : BE 1/2 ~ 3/4" • BE 1 ~ 1 1/2" (2") Threading Oil White 4L (1can)

For Water, Gas, Electricity Pipe, and Bolt threading.

Beaver 100

Code No. **BE1AT**

1/4" ~ 4"

Optional item Water/Gas pipe: 1/4 ~ 3/8"
Bolt : 3/8 ~ 2" • 10 ~ 36mm
Conduit : 19 ~ 75mm • 1/2 ~ 3"

2 stage speed system helps to cut off any sizes of pipes !!


Weight	Spindle Speed	Motor	Standard Accessories
105kg	45 • 18min ⁻¹ (2 speed)	1,140W voltage made to order	Beaver Auto Die - Head : 1 ~ 2", 2 1/2 ~ 4" Dies : BE 1/2 ~ 3/4" • BE 1 ~ 1 1/2" (2"), AT2 1/2 ~ 4" Threading Oil White 4L (1can)

Main Applicable Die - Heads



Beaver Auto Type

Item	Code No.	Applicable Model
BSPT 1/2 ~ 1"	BE380	Beaver 25
BSPT 1/2 ~ 2"	BE001	Beaver 50 • 80 • 100
BSPT 2 1/2 ~ 3"	52200	Beaver 50 • 80 • 100
BSPT 2 1/2 ~ 4"	64200	Beaver 50 • 80 • 100
NPT 1/2 ~ 1"	BE389	Beaver 25
NPT 1/2 ~ 2"	BE01N	Beaver 50 • 80 • 100
NPT 2 1/2 ~ 3"	52600	Beaver 50 • 80 • 100
NPT 2 1/2 ~ 4"	64350	Beaver 50 • 80 • 100

Manual Type

Item	Code No.	Applicable Model
BSPT 1/4 ~ 3/8" • BSW 3/8 ~ 1"	AS109	Beaver 25
BSPT 1/4 ~ 3/8" • BSW 3/8 ~ 1"	20114	Beaver 50 • 80 • 100
BSPT / NPT 1/2 ~ 2"	63090	Beaver 50 • 80 • 100
BSPT 2 1/2 ~ 3" • NPT 2 ~ 3"	20127	Beaver 50 • 80 • 100
BSPT 3 1/2 ~ 4"	04110	Beaver 50 • 80 • 100

Main Applicable Dies



Automatic

Item	Code No.	Applicable Model
BSPT 1/2 ~ 3/4"	AS086	Beaver 25
BSPT 1 ~ 1 1/2"	AS087	Beaver 25
BSPT 1/2 ~ 3/4"	89266	Beaver 50 • 80 • 100
BSPT 1 ~ 2"	89267	Beaver 50 • 80 • 100
BSPT 2 1/2 ~ 3"	89228	Beaver 50 • 80 • 100
BSPT 2 1/2 ~ 4"	59803	Beaver 50 • 80 • 100
NPT 1/2 ~ 3/4"	AS120	Beaver 25
NPT 1 ~ 1 1/2"	AS121	Beaver 25
NPT 1/2 ~ 3/4"	89101	Beaver 50 • 80 • 100
NPT 1 ~ 2"	89102	Beaver 50 • 80 • 100
NPT 2 1/2 ~ 3"	89245	Beaver 50 • 80 • 100
NPT 2 1/2 ~ 4"	59912	Beaver 50 • 80 • 100

Manual

Item	Code No.	Applicable Model
BSPT 1/4 ~ 3/8"	89046	Beaver 25 • 50 • 80 • 100
BSPT 1/2 ~ 3/4"	89266	Beaver 50 • 80 • 100
BSPT 1 ~ 2"	89267	Beaver 50 • 80 • 100
BSPT 2 ~ 3"	89051	Beaver 50 • 80 • 100
BSPT 3 1/2 ~ 4"	89052	Beaver 50 • 80 • 100
NPT 1/4 ~ 3/8"	89100	Beaver 25 • 50 • 80 • 100
NPT 1/2 ~ 3/4"	89101	Beaver 50 • 80 • 100
NPT 1 ~ 2"	89102	Beaver 50 • 80 • 100
NPT 2 1/2 ~ 3"	89258	Beaver 50 • 80 • 100
NPT 3 1/2 ~ 4"	89105	Beaver 50 • 80 • 100

Pipe Cutter Blade

Cutter blade for pipe threading machines. Smooth cut surface ! Long life !



Item	Code No.	Applicable Model
Cutter Blade For steel pipes	AS058	Beaver 25
Cutter Blade for Beaver 25 For stainless steel pipes	AS113	Astronic 1
Cutter Blade For steel pipes	04510	Except Beaver 25, Astronic 1
Cutter Blade For stainless steel pipes	70076	

Carbon Brushes

For pipe threading machine motors.



Item	Size	Code No.	Applicable Model
Carbon Brush	6 × 10 × 14	70819	Beaver 25, Astronic1
	6.5 × 12.5 × 17	70851	Beaver 50, Astronic 1.5 • 2
	6 × 20 × 24.5	70858	Beaver 80 • 100, Astronic 4
	9 × 16 × 19	70886	Astronic 3
Carbon Brush MD (※For Mitsubishi motor)	6.5 × 12.5 × 17	70706	Piset 40 • 60 • 90 Bolt machine No.1

※ Only available for a motor with a cream colour cap (For black cap is not available).

For Bolt Threading

Bolt Machine 25 Pro


METRIC : Code No. **BM10M**BSW : Code No. **BM10W**UNC : Code No. **BM10U**
Right: 8 ~ 24mm
5/16" ~ 1"


**ACHIEVE HIGH SPEED BOLT
THREADING WITH POWERFUL MOTOR !!**



Specification	Weight	Spindle Speed	Motor	Stroke	Standard Accessories
Metric					Die - Head : Right 8 ~ 24mm Dies : Right 12mm & 14 ~ 16mm 4L Threading Oil Red (4L), Set Lever Single - Head Wrench Hexagonal Wrench, Legs
BSW	45Kg	80min ⁻¹	1,140W Voltage made to order	180mm	Die - Head: Right BSW 5/16 ~ 1" Dies : Right BSW 1/2" & 5/8" 4L Threading Oil Red (4L), Set Lever Single - Head Wrench Hexagonal Wrench, Legs
UNC**					Die - Head : Right UNC / UNF 5/16 ~ 1" Dies : Right UNC 1/2" & 5/8" 4L Threading Oil Red (4L), Set Lever Single - Head Wrench Hexagonal Wrench, Legs

** UNF applicable with optional UNF dies.

Die - Head



Standard Die - Head

Specification	Size	Code No.
Metric	M8 ~ 24	10118
BSW	5/16 ~ 1"	10100
UNC / UNF	5/16 ~ 1"	10119

Dies



Standard Dies

Specification	Size	Code No.
Metric	M12	89304
	M14 ~ 16	89305
BSW	1/2"	89292
	5/8"	89293
UNC / UNF	1/2"	89315
	5/8"	89317

For Water, Gas, Electricity Pipe, and Bolt threading

Supermatic 2000

Code No. **SM207**

BSPT 1/2" ~ 2"

HIGH SPEED

 Optional Bolt : 3/8 ~ 2" • 10 ~ 24mm
 item Conduit : 19 ~ 51mm • 1/2 ~ 2"

Applicable for mass production of pipes up to 2".
 Especially for steel pipe. (Not applicable to lined pipes)

Weight	Spindle Speed	Motor	Standard Accessories
113kg	63min ⁻¹	200 ~ 220V 1700W	Die - Head : AT 1/2 ~ 3/4" • AT 1 ~ 2" Dies : AT 1/2 ~ 3/4" (HSS), AT 1 ~ 2" (HSS)

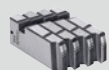
Die - Head



Standard Die - Head

Item	Code No.
BSPT 1/2 ~ 3/4"	BE01A
BSPT 1 ~ 2"	52144

Dies



Standard Dies

Item	Code No.
BSPT 1/2 ~ 3/4"	89255
BSPT 1 ~ 2"	89256



Equipped Auto Chuck

HIGH SPEED THREADING MACHINE !
**Increase efficiency and shorten
 threading time to 2/3**



For on-site repairs and threading in confined spaces

Supertronic 2

Code No. **ST504**
BSPT 1/4" ~ 2"


Suitable for on-site pipe threading and repairing pipes in a limited work space.
For steel pipe. (Not applicable to Outer Lined pipes)

Die - Head fixing ring



Easy to install / uninstall
Die - Heads (1/4" ~ 1 1/4").

Gear Box

Compact Gear Box makes
operation in a limited space
possible.

Grip

Designed for easy grip
based on Ergonomics.

Motor

High Power without loud
noise.

Weight	Spindle speed	Motor	Standard Accessories
7.2kg	25min ⁻¹	900W Voltage made to order	Die - Head with Dies (1/2" • 3/4" • 1" • 1 1/4" • 1 1/2" • 2") Pipe Grip, Adaptor (1/4 ~ 1 1/4") Threading oil White (0.3L), Carrying Case

Die - Head with Dies

4 Dies set.

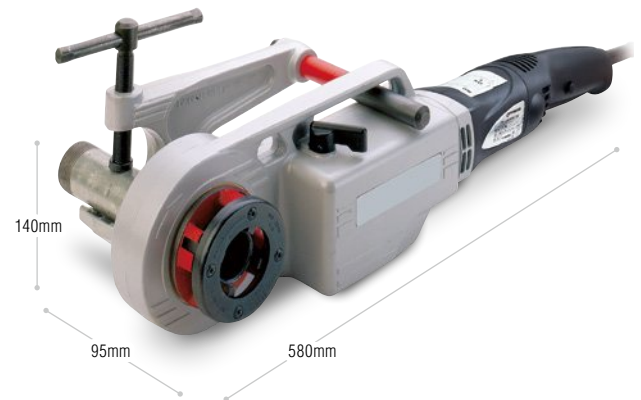


Item		Code No.	Item		Code No.
Die - Head with Dies	BSPT 1/4"	R70821	Die - Head with Dies	BSPT 1"	R70825
	BSPT 3/8"	R70822		BSPT 1 1/4"	R70826
	BSPT 1/2"	R70823		BSPT 1 1/2"	R70842
	BSPT 3/4"	R70824		BSPT 2"	R70843

※ Depth of threads is not adjustable.
※ Supplying only Die - Head with Dies set.



LONG SELLER !!



Hand Ratchet Threading for on-site works & repairs

Hand Threader Set 3

Code No. **R70881**
BSPT 1/4" ~ 1 1/4"
Manual Type

High quality with light weight aluminum body.
For steel pipe. (Not applicable to Outer Lined pipes)

Standard
Accessories

Die - Head with Dies (1/2" • 3/4"), Ratchet handle, Carrying Case



Die - Head with Dies

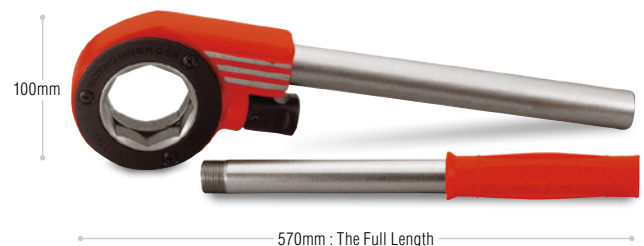
4 Dies set.

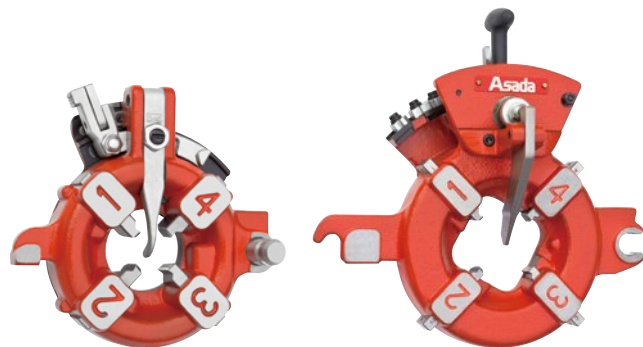


Item		Code No.	Item		Code No.
Die - Head with Dies	BSPT 1/4"	R70821	Die - Head with Dies	BSPT 3/4"	R70824
	BSPT 3/8"	R70822		BSPT 1"	R70825
	BSPT 1/2"	R70823		BSPT 1 1/4"	R70826

※ Depth of threads is not adjustable.
※ Supplying only Die - Head with Dies set.

For Small Plumbing Maintenance !!





Beaver Auto (BE)



Manual

1 1/2" is not applicable

Item			Code No.	Applicable Model					
Type	Standard	Size		Beaver 25, Astronic 1	Astronic 1.5	Beaver 50, Supermatic, AS2, P40, P60	Beaver 80, AS3, P90, 3SG	Beaver 100, AS4, 4SB	No.6
Beaver (Auto)	BSPT	BE 1/2 ~ 1"	BE380	●	●				
		BE 1/2 ~ 2"	BE001			●	●	●	●
		AT 1/2 ~ 3/4"	BE01A			●	●	●	●
		AT 1 ~ 2"	52144			●	●	●	●
		AT 1/2 ~ 2"	52100			●	●	●	●
		AT 2 1/2 ~ 3"	52200				●	●	●
		AT 2 1/2 ~ 4"	64200					●	●
Manual	BSPT	1/4 ~ 3/8" (BSW 3/8 ~ 1")	AS109	●	●				
		1/4 ~ 3/8" (BSW 3/8 ~ 1")	20114			●	●	●	
		1/2 ~ 2" (NPT 1/2 ~ 2")	63090			●	●	●	●
		BE 1/2 ~ 2" (Type RD)	BE009			●	●	●	●
		2 ~ 3" (NPT 2 1/2 ~ 3")	20127				●	●	●
		3 1/2 ~ 4"	04110					●	●
Beaver (Auto)	NPT	BE 1/2 ~ 1"	BE389	●	●				
		BE 1/2 ~ 2"	BE01N			●	●	●	●
		BE 1/2 ~ 2" (Type RD)	BE057			●	●	●	●
		AT 1/2 ~ 2"	52500			●	●	●	●
		AT 2 1/2 ~ 3"	52600				●	●	●
		AT 2 1/2 ~ 4"	64350					●	●
Manual	NPT	1/4 ~ 3/8"	AS122	●	●				
		1/4 ~ 3/8"	20165			●	●	●	
		1/2 ~ 2" (BSPT 1/2 ~ 2")	63090			●	●	●	●
		BE 1/2 ~ 2" (Type RD)	BE068			●	●	●	●
		2 1/2 ~ 3" (BSPT 2 ~ 3")	20127				●	●	●
For Bolt Thread (Manual)	BSW	3/8 ~ 1" (BSPT 1/4 ~ 3/8")	AS109	●	●				
		3/8 ~ 1" (BSPT 1/4 ~ 3/8")	20114			●	●	●	
		1 1/8 ~ 2"	63096			●	●	●	
	ISO Metric	10 ~ 24mm	AS110	●	●				
		10 ~ 24mm	20158			●	●	●	
		27 ~ 36mm (42mm)	63095 ※1			●	●	●	
	UNC / UNF	3/8 ~ 1"	20160			●	●	●	
	UNC	1 1/8 ~ 1 1/2"	63090 ※2			●	●	●	
For Conduit Thread (Manual)	BSPS(BSPP)/C	1/2 ~ 1 1/4" C19 ~ 39mm	AS124	●	●				
		1/2 ~ 1 1/4" C19 ~ 39mm	20147			●	●	●	
		1 1/2 ~ 3" C51 ~ 75mm	20157			●	●	●	●
	NPSM	1/2 ~ 1 1/4"	20171			●	●	●	
		1 1/2 ~ 3"	20172			●	●	●	
	ISO Metric	16 ~ 25mm	AS134	●	●				
		16 ~ 32mm	63094			●	●	●	

※1 Scale Plate for 42mm is not available.

※2 Scale Plate for UNC is not available.

For Bolt Threading Machine

Die - Head



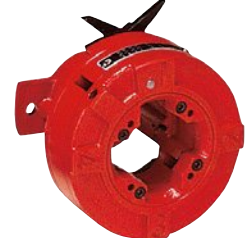
Bolt Machine 25Pro / No.1 (Right)



Bolt Machine 25Pro / No.1 (Left) ※2



Bolt Machine No.2 (Right)



Bolt Machine No.2 (Left)

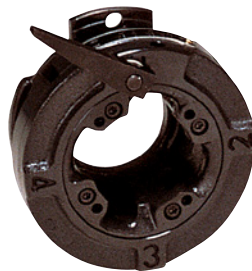
Type (Manual)	Item		Code No.	Applicable Model	
	Standard	Size		Bolt Machine 25Pro / No.1	Bolt Machine No.2 ※1
For Bolt Thread	BSW	5/16 ~ 1"	10100	●	
	BSW Left	3/8 ~ 1"	10117	● ※2	
	ISO Metric	8 ~ 24mm	10118	●	
	ISO Metric Left	8 ~ 24mm	10126	● ※2	
	UNC / UNF	5/16 ~ 1"	10119	●	
For Bolt Thread	BSW Left	3/8 ~ 1"	18135		●
	BSW Left	1 1/8 ~ 1 1/2"	18137		●
	ISO Metric	27 ~ 36mm	18167		●
	ISO Metric Left	8 ~ 24mm	18177		●

※1 Die - Heads for Bolt Machine No.2 will be discontinued after current stocks run out.

※2 Left thread special model is required to use Left Die - Heads with Bolt Machine 25Pro.

For Conduit Machine

Die - Head



Type (Manual)	Item		Code No.	Applicable Model	
	Standard	Size		Mini - Con 82	Mini - Con 104
For Conduit Thread	BSPS (C)	1 1/2 ~ 3" : C51 ~ 75mm	19100	●	
	NPSM	1 1/2 ~ 3"	19119	●	
	ISO Metric	40 ~ 63mm	19122	●	
For Taper Pipe Thread	BSPT	1/2 ~ 1 1/4"	17132	●	
For Conduit Thread	BSPS (C)	1/2 ~ 1 1/4" : C19 ~ 39mm	33112		●
		1 1/2 ~ 3" : C51 ~ 75mm	33114		●
		3 1/2 ~ 4"	33100		●
For Taper Pipe Thread	BSPT	1/2 ~ 1 1/4"	33117		●

※ Die - Heads for Mini - Con will be discontinued after current stocks run out.

Dies

For Taper Pipe Thread (Beaver, Astronic, Piset, Mini-Con)

Standard	Size	Code No.	Material	T.P.I.	Suitable Die - Head
BSPT	AM1/2 ~ 3/4"	AS086	Alloy	14	Beaver Auto (Beaver25, AS1, 1.5)
	AM1 ~ 1 1/2"	AS087		11	
	AM1/2 ~ 3/4"	AS111	HSS	14	Beaver Auto (Beaver25, AS1, 1.5)
	AM1 ~ 1 1/2"	AS112		11	
	BE1/2 ~ 3/4"	89266	Alloy	14	Beaver Auto (Beaver, Astronic)
	BE1 ~ 2"	89267		11	
	M/AT1/2 ~ 3/4"	89211		14	
	M/AT1 ~ 2"	89227		11	
	AT2 1/2 ~ 3"	89228		11	
	AT2 1/2 ~ 4"	59803		11	
	AT3 1/2 ~ 4"	89229		11	
	AT5 ~ 6"	89244		11	
	AT1/2 ~ 3/4"	89203	HSS	14	Beaver Auto (Beaver, Astronic)
	AT1 ~ 2"	89248		11	
	AT2 1/2 ~ 3"	89249		11	
	AT2 1/2 ~ 4"	59966		11	
	A1 ~ 2" (LARGE)	89133	Alloy	11	Automatic (A-Die - Head)
	A1 1/2 ~ 2" (LARGE)	89116		11	
	A2 1/2 ~ 3" (LARGE)	89118		11	
	A3 1/2 ~ 4" (LARGE)	89131		11	
	A5 ~ 6" (LARGE)	89132	HSS	11	Automatic (A-Die - Head)
	A1/2 ~ 3/4" (LARGE)	89203		14	
	A1 ~ 2" (LARGE)	89160		11	
	A2 1/2 ~ 3" (LARGE)	89205		11	
	1/4 ~ 3/8"	89046	Alloy	19	Manual
	M/AT1/2 ~ 3/4"	89211		14	
	M/AT1 ~ 2"	89227		11	
	1 1/2 ~ 2"	89049		11	
	2 ~ 3"	89051		11	
	3 1/2 ~ 4"	89052		11	
	1/4 ~ 3/8"	89053	HSS	19	
	1/2 ~ 3/4"	89203		14	
	1 ~ 1 1/2"	89248		11	
	1 1/2 ~ 2"	89056		11	
	2 ~ 3"	89142		11	
	3 1/2 ~ 4"	89184		11	
	1/2 ~ 3/4" Mini-Con	89036	Alloy	14	Mini-Con 82, 104
	1 ~ 1 1/4" Mini-Con	89037		11	
	AT1/2 ~ 3/4" (For Steel Pipe)	89255	HSS	14	Auto (Beaver, Astronic, Supermatic)
	AT1 ~ 2" (For Steel Pipe)	89256		11	

Standard	Size	Code No.	Material	T.P.I.	Suitable Die - Head
NPT	AM1/2 ~ 3/4"	AS120	Alloy	14	Beaver Auto (Beaver25, AS1, 1.5)
	AM1 ~ 1 1/2"	AS121		11.5	
	M/AT1/2 ~ 3/4"	89101	Alloy	14	Beaver Auto (Beaver, Astronic)
	M/AT1 ~ 2"	89102		11.5	
	AT2 1/2 ~ 3"	89245		8	
	AT2 1/2 ~ 4"	59912		8	
	AT3 1/2 ~ 4"	89246		8	
	AT5 ~ 6"	89247	HSS	8	Beaver Auto (Beaver, Astronic)
	1/2 ~ 3/4"	89157		14	
	1 ~ 2"	89158		11.5	
	2 1/2 ~ 3"	89282		8	
	2 1/2 ~ 4"	59997		8	
	1/4 ~ 3/8"	89100	Alloy	18	Manual
	M/AT1/2 ~ 3/4"	89101		14	
	M/AT1 ~ 2"	89102		11.5	
	1 1/2 ~ 2"	89103		11.5	
	2 1/2 ~ 3"	89258	HSS	8	Manual
	3 1/2 ~ 4"	89105		8	
	1/2 ~ 3/4"	89157		14	
	1 ~ 2"	89158		11.5	
	1 1/2 ~ 2"	89159		11.5	
	2 1/2 ~ 3"	89273		8	
	2 1/2 ~ 3" (LARGE)	89171	Alloy	8	Automatic (A-Die - Head)
	3 1/2 ~ 4" (LARGE)	89172		8	
	A1 ~ 2" (LARGE)	89195		11.5	
	A2 1/2 ~ 3" (LARGE)	89134		8	
	A3 1/2 ~ 4" (LARGE)	89135		8	
	A5 ~ 6" (LARGE)	89136		8	

Standard	Size	Code No.	Material	T.P.I.	Suitable Die - Head
BSPT	1/4 ~ 3/8" Type RD	89276	Alloy	19	Type RD Die-Head (Automatic)
	1/2 ~ 3/4" Type RD	89270		14	
	1/2" Type RD	89271		11	
NPT	1/4 ~ 3/8" Type RD	89277	Alloy	18	Type RD Die-Head (Automatic)
	1/2 ~ 3/4" Type RD	89278		14	
	1/2" Type RD	89279		11.5	
BSPP (BSPP)	1/2 ~ 3/4" Type RD	89280	Alloy	14	Type RD Die-Head (Manual)
	1/2" Type RD	89281		11	

Economical Dies

Standard	Size	Code No.	Type	T.P.I.	Suitable Die-Head
BSPT	M/AT1/2-3/4"	89283	Eco	14	Beaver Auto, Manual
	M/AT1-2"	89284		11	
NPT	M/AT1/2-3/4"	89285	Eco	14	Beaver Auto, Manual
	M/AT1-2"	89286		11.5	

For Parallel Pipe (Condit) Thread (Beaver, Astronic, Piset, Mini-Con)

Standard	Size	Code No.	Material	T.P.I.	Suitable Die - Head
C	19 ~ 25mm	89021	Alloy	16	Mini-Con, For Conduit (Manual) (0.25kgs)
	31 ~ 39mm	89022		16	
	51 ~ 75mm	89023		16	
Standard	Size	Code No.	Material	T.P.I.	Suitable Die - Head
BSPT (BSPP)	1/2 ~ 3/4"	89024	Alloy	14	Mini-Con, For Conduit (Manual) (0.25kgs)
	1 ~ 1 1/4"	89025		11	
	1 1/2 ~ 2"	89026		11	
	2 1/2 ~ 3"	89027		11	
	3 1/2 ~ 4"	89145	Alloy	11	Mini-Con 104 (0.25kgs)
	3 1/2 ~ 4" (LARGE)	89071	Alloy	11	For Conduit (Manual) (0.7kgs)
	1/2 ~ 3/4"	89259	HSS	14	Mini-Con, For Conduit (Manual) (0.25kgs)
	1 ~ 1 1/4"	89260		11	
	1 1/2 ~ 2"	89261		11	
	2 1/2 ~ 3"	89262		11	

Standard	Size	Code No.	Material	T.P.I.	Suitable Die - Head
NPSM	1/2 ~ 3/4"	89148	Alloy	14	Mini-Con, For Conduit (Manual) (0.25kgs)
	1 ~ 1 1/4"	89149		11.5	
	1 1/2 ~ 2"	89150		11.5	
	2 1/2 ~ 3"	89151		8	
	3 1/2 ~ 4"	89152		8	
Metric Conduit	16 ~ 20mm	89110	Alloy	1.5mm	For Conduit (Manual) (0.6kgs)
	25 ~ 32mm	89111		1.5mm	
	16 ~ 32mm	89208		1.5mm	
Metric Conduit	40 ~ 63mm	89209	Alloy	1.5mm	Auto (Beaver25, AS1, 1.5) Mini-Con 82 (0.25kgs)
	40 ~ 63mm	89209		1.5mm	

Dies

For Bolt Thread (Beaver, Astronic, Piset, Mini - Con, Bolt Machine)

Standard	Size	Code No.	Material	T.P.I.	Suitable Die - Head
BSW	5/16"	89079	Alloy	18	No.1, Mini - Con
	3/8"	89080	Alloy	16	25Pro No.1 For Bolt (Manual)
	1/2"	89081		12	
	5/8"	89082		11	
	3/4"	89083		10	
	7/8"	89084		9	
	1"	89085		8	
	1 1/8 ~ 1 1/4"	89143	Alloy	7	For Bolt (Manual)
	1 3/8 ~ 1 1/2"	89144		6	
	1 5/8 ~ 1 3/4"	89199		5	
	1 7/8 ~ 2"	89200		4.5	
	Left 3/8"	89086	Alloy	16	No.1
	Left 1/2"	89087		12	
	Left 5/8"	89088		11	
	Left 3/4"	89089		10	
	Left 7/8"	89090		9	
	Left 1"	89091		8	
	5/16"	89290	N - Alloy	18	25Pro No.1 For Bolt (Manual)
	3/8"	89291		16	
	1/2"	89292		12	
	5/8"	89293		11	
	3/4"	89294		10	
	7/8"	89295	HSS	9	No.1, Mini - Con
	1"	89296		8	
	5/16"	18503		18	
	3/8"	18504		16	
	1/2"	18505		12	25Pro No.1 No.2 Min - Con For Bolt (Manual)
	5/8"	18506	HSS	11	
	3/4"	18507		10	
	7/8"	18508		9	
	1"	18509		8	
	1 1/8 ~ 1 1/4"	18510	HSS	7	No.2
	1 3/8 ~ 1 1/2"	18512	HSS	6	
	1 1/8 ~ 1 1/4"	89225	HSS	7	For Bolt (Manual)
	1 3/8 ~ 1 1/2"	89226		6	
	1 5/8 ~ 1 3/4"	89275		5	
	Left 3/8"	18513	HSS	16	No.1 No.2
	Left 1/2"	18514		12	
	Left 5/8"	18515		11	
	Left 3/4"	18516		10	
	Left 7/8"	18517		9	
	Left 1"	18518	HSS	8	No.2
	Left 1 1/8 ~ 1 1/4"	18519		7	
	Left 1 1/2"	18521		6	

Standard	Size	Code No.	Material	T.P.I.	Suitable Die - Head
UNC	5/16"	89137	Alloy	18	25Pro No.1 No.2 For Bolt (Manual)
	3/8"	89015		16	
	7/16"	89138		14	
	1/2"	89016		13	
	9/16"	89139		12	
	5/8"	89017		11	
	3/4"	89018		10	
	7/8"	89019		9	
	1"	89020		8	
	1 1/8 ~ 1 1/4"	89197	Alloy	7	For Bolt (Manual)
	1 3/8 ~ 1 1/2"	89198		6	
UNC	5/16"	89312	N - Alloy	18	25Pro No.1 For Bolt (Manual)
	3/8"	89313		16	
	1/2"	89315		13	
	5/8"	89317		11	

Standard	Size	Code No.	Material	T.P.I.	Suitable Die - Head
Metric	8mm	89001	Alloy	1.25mm	25Pro, No.1, Mini - Con
	10mm	89002	Alloy	1.5mm	25Pro No.1 For Bolt (Manual)
	12mm	89003		1.75mm	
	14 ~ 16mm	89140		2mm	
	18 ~ 22mm	89141		2.5mm	
	24mm	89009		3mm	
	27mm	89192	Alloy	3mm	For Bolt (Manual)
	30 ~ 33mm	89193		3.5mm	
	36mm	89194		4mm	
	42mm	89234		4.5mm	
	Left 8mm	89164	Alloy	1.25mm	No.1
	Left 10mm	89165		1.5mm	
	Left 12mm	89166		1.75mm	
	Left 14 ~ 16mm	89167		2mm	
	Left 18 ~ 22mm	89168		2.5mm	
	Left 24mm	89169	Alloy	3mm	For Bolt (Manual)
	Left 27mm	89230		3mm	
	Left 30 ~ 33mm	89231		3.5mm	
	Left 36mm	89232		4mm	
	Left 42mm	89233		4.5mm	
	8mm	89302	N - Alloy	1.25mm	25Pro No.1 For Bolt (Manual)
	10mm	89303		1.5mm	
	12mm	89304		1.75mm	
	14 ~ 16mm	89305		2mm	
	18 ~ 22mm	89306		2.5mm	
	24mm	89307	HSS	3mm	25Pro, No.1, No.2, Mini - Con
	8mm	18522		1.25mm	
	10mm	18523		1.5mm	
	12mm	18524		1.75mm	
	14 ~ 16mm	18538		2mm	No.1 No.2 Min - Con For Bolt (Manual)
	18 ~ 22mm	18539		2.5mm	
	24mm	18530		3mm	
	27mm	18531	HSS	3mm	No.2
	30 ~ 33mm	18532		3.5mm	
	36mm	18534		4mm	
	Left 8mm	18556	HSS	1.25mm	No.1 No.2
	Left 10mm	18541		1.5mm	
	Left 12mm	18542		1.75mm	
	Left 14 ~ 16mm	18543		2mm	
	Left 18 ~ 22mm	18544		2.5mm	
	Left 24mm	18555	HSS	3mm	No.1 No.2

Standard	Size	Code No.	Material	T.P.I.	Suitable Die - Head
UNC	3/4"	89318	N - Alloy	10	25Pro No.1 For Bolt (Manual)
	7/8"	89319		9	
	1"	89320		8	
UNC	1 1/4"	18536	HSS	7	No.2
	1 1/2"	18537		6	

Standard	Size	Code No.	Material	T.P.I.	Suitable Die - Head
UNF	3/8"	89038	Alloy	24	25Pro No.1 No.2 For Bolt (Manual)
	7/16"	89039		20	
	1/2"	89040		20	
	9/16"	89041		18	
	5/8"	89042		18	
	3/4"	89043		16	
	7/8"	89044		14	
	1"	89045		12	

For precision tests of taper screws (JIS B0203)

Taper Thread Gauge 50

BSPT 1/2"~1" set: Code No. **56100**

BSPT 1/2"~2" set: Code No. **56127**

For inspecting accuracy of tapered threads.

Thread accuracy can be checked easily before and during threading.

Durable die is made of steel.

Item	Set Accessories
Taper Thread Gauge Set 1/2"~1"	Taper Thread Gauge (1/2"•3/4"•1"), Case
Taper Thread Gauge Set 1/2"~2"	Taper Thread Gauge (1/2"•3/4"•1"•1 1/4"•1 1/2"•2"), Case

Taper Thread Gauge (BSPT)

Size	Code No.	Size	Code No.
1/2"	56103	2"	56116
3/4"	56104	2 1/2"	56117
1"	56105	3"	56118
1 1/4"	56114	4"	56119
1 1/2"	56115		



EASY TO CHECK!



※ Photo: Taper Thread Gauge Set BSPT 1/2"~1"

For manufacture of short length nipples

Nipple Max Set

Code No. **36003**

1/2"~3/4" Set

Easy set up! Just hold in chuck of threading machine to make small nipples.

※ Not applicable to Out-side lining pipes.

Can be used in all brands of threading machines.

Item	Nipple Max (1/2"•3/4"), Case
------	------------------------------

Nipple Max

Size	Code No.	Size	Code No.
1/2"	36100	2"	36150
3/4"	36110	2 1/2"	36160
1"	36120	3"	36170
1 1/4"	36130	3 1/2"	36180
1 1/2"	36140	4"	36190



For manufacture of short length nipples

Nipple Chuck

BSPT: Code No. **01810**

NPT: Code No. **01850**

1/2"~2" Set

Easy operation—Nipple will not jam in chuck for release after threading the nipple.

Can be used in all brands of threading machines.

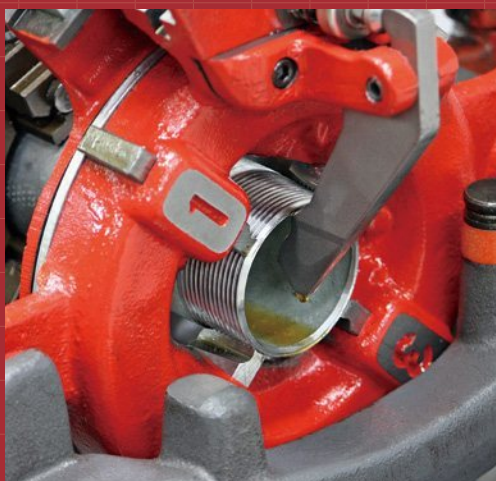
Not available for Astronic 1 and Beaver 25.



Set Accessories	Cap (1/2"•3/4"•1"•1 1/4"•1 1/2"•2"), Handle, Shaft, Case
-----------------	--

Effective cooling and lubrication ensures longer life of the dies !!

Asada Threading Oil



We have White threading oil for water pipes and Red threading oil for bolt and conduit pipes. Please use right oil for your applications.

Right time to change the oil

- ① When oil goes white because of water contamination.
- ② When fine swarf of pipes is mixed with oil excessively.
- ③ When oil goes dark because of age & use.

Low quality oil affects life of Dies and gives low quality threads.

Change the oil immediately when any of the above conditions occur.

For Water Pipes

Threading Oil : WHITE

0.3L : Code No. **ST014**

16L : Code No. **85630**

4L : Code No. **85629**

MSDS

Meets the specification JWWA K137 of Japan Water Supply Association.

Ideal for water supply pipe.

Water washable oil which can be washed out easily after threading works.

Sharp cutting without distortions. ※ Old oil causes a bad thread.

Applicable to Stainless steel pipes.



0.3L



4L
※ 6cans / lot



16L

For Bolt and Conduit Pipes

Threading Oil : RED

4L : Code No. **85628**

16L : Code No. **85641**

MSDS

Ideal for Bolt and Conduit Pipes.

Sharp cutting without distortions. ※ Old oil causes a bad thread.

Applicable to Stainless steel pipes & Gas pipes.



4L
※ 6cans / lot



16L

For Bolt and Conduit Pipes

Threading Oil : COOL



200L : Code No. **85640S** ※ 4L & 16L available with requests

MSDS

More economical threading oil ideal for pipe & bolt threading machines.

Reduce cutting resistance and increase dies life.

Cools threads and pipe during operation.

Improves thread quality.



4L



16L

※ Sample images of 4L & 16L

For precision processing of long pipes

Pipe Support



For Beaver 25



For Beaver 50 • 80 • 100, Astronic, Piset 40 • 60



For Mini-Con



PIPE JACK BALL H
PAT.

Large variety of models !

Item	Code No.	Min Hight (mm)	Max Hight (mm)	Applicable Model
Pipe Support (When Legs are not used for the machine)	AS105	145	230	Beaver 25, Astronic 1
	88901	187	244	Beaver 50, Astronic 1.5 • 2 • 3, Piset 40 • 60 • 90
	59920	261	342	Beaver 80 • 100, Astronic 4
PIPE Jack Ball H	S781305	710	1,250	All models (When Legs are used for the machine)

For Steel, Aluminum, Stainless, and Plastic pipes

Seal Tape

Spread type: Code No. **R50356**

Flexible type: Code No. **R50356C**

MSDS

To seal steel, aluminum, stainless, and plastic pipes – 100 ~ 230°C.

For smooth installation and uninstallation.

※ Can't be used for Alkali fusion steel and Chlorine trifluoride.



For airtight connection



Depth × Width × Length	0.1mm × 13mm × 15m
Quantity	500

For Bending pipes

Bender 50 Eco

Code No. **HB002**

Capacity: 1/2 ~ 2" N.B. Pipes
Pipe Wall Thickness: 2.75 ~ 4.5mm

Hydraulic Bender.

Easy to move on casters.

Output	16t
Degree of bending	90° / Bend Radius R: 4DR (all sizes)
Cylinder Stroke	240mm
Weight	44.5kg
Standard Accessories	bend adapter: 1/2" • 3/4" • 1" • 1 1/4" • 1 1/2" • 2"

Shoe

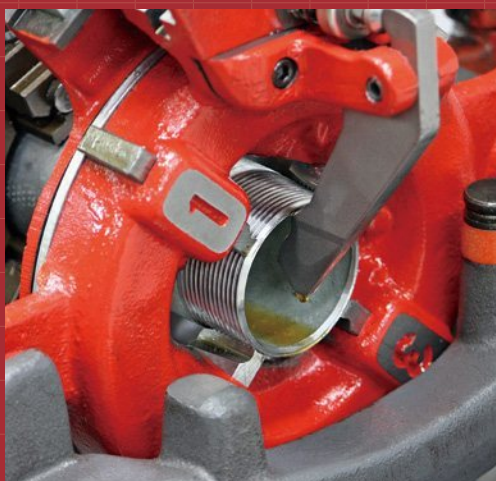
Size	Bend Radius R	Code No.	Size	Bend Radius R	Code No.
1/2"	87	HB0231	1 1/4"	171	HB0234
3/4"	109	HB0232	1 1/2"	195	HB0235
1"	136	HB0233	2"	242	HB0236

Complete set!!



Effective cooling and lubrication ensures longer life of the dies !!

Asada Threading Oil



We have White threading oil for water pipes and Red threading oil for bolt and conduit pipes. Please use right oil for your applications.

Right time to change the oil

- ① When oil goes white because of water contamination.
- ② When fine swarf of pipes is mixed with oil excessively.
- ③ When oil goes dark because of age & use.

Low quality oil affects life of Dies and gives low quality threads.

Change the oil immediately when any of the above conditions occur.

For Water Pipes

Threading Oil : WHITE

0.3L : Code No. **ST014**

16L : Code No. **85630**

4L : Code No. **85629**

MSDS

Meets the specification JWWA K137 of Japan Water Supply Association.

Ideal for water supply pipe.

Water washable oil which can be washed out easily after threading works.

Sharp cutting without distortions. ※ Old oil causes a bad thread.

Applicable to Stainless steel pipes.



0.3L



4L
※ 6cans / lot



16L

For Bolt and Conduit Pipes

Threading Oil : RED

4L : Code No. **85628**

16L : Code No. **85641**

MSDS

Ideal for Bolt and Conduit Pipes.

Sharp cutting without distortions. ※ Old oil causes a bad thread.

Applicable to Stainless steel pipes & Gas pipes.



4L
※ 6cans / lot



16L

For Bolt and Conduit Pipes

Threading Oil : COOL



200L : Code No. **85640S** ※ 4L & 16L available with requests

MSDS

More economical threading oil ideal for pipe & bolt threading machines.

Reduce cutting resistance and increase dies life.

Cools threads and pipe during operation.

Improves thread quality.



4L



16L

※ Sample images of 4L & 16L

For precision processing of long pipes

Pipe Support



For Beaver 25



For Beaver 50 • 80 • 100, Astronic, Piset 40 • 60



For Mini-Con



PIPE JACK BALL H
PAT.

Large variety of models !

Item	Code No.	Min Hight (mm)	Max Hight (mm)	Applicable Model
Pipe Support (When Legs are not used for the machine)	AS105	145	230	Beaver 25, Astronic 1
	88901	187	244	Beaver 50, Astronic 1.5 • 2 • 3, Piset 40 • 60 • 90
	59920	261	342	Beaver 80 • 100, Astronic 4
PIPE Jack Ball H	S781305	710	1,250	All models (When Legs are used for the machine)

For Steel, Aluminum, Stainless, and Plastic pipes

Seal Tape

Spread type: Code No. **R50356**

Flexible type: Code No. **R50356C**

MSDS

To seal steel, aluminum, stainless, and plastic pipes – 100 ~ 230°C.

For smooth installation and uninstallation.

※ Can't be used for Alkali fusion steel and Chlorine trifluoride.



For airtight connection



Depth × Width × Length	0.1mm × 13mm × 15m
Quantity	500

For Bending pipes

Bender 50 Eco

Code No. **HB002**

Capacity: 1/2 ~ 2" N.B. Pipes
Pipe Wall Thickness: 2.75 ~ 4.5mm

Hydraulic Bender.

Easy to move on casters.

Output	16t
Degree of bending	90° / Bend Radius R: 4DR (all sizes)
Cylinder Stroke	240mm
Weight	44.5kg
Standard Accessories	bend adapter: 1/2" • 3/4" • 1" • 1 1/4" • 1 1/2" • 2"

Shoe

Size	Bend Radius R	Code No.	Size	Bend Radius R	Code No.
1/2"	87	HB0231	1 1/4"	171	HB0234
3/4"	109	HB0232	1 1/2"	195	HB0235
1"	136	HB0233	2"	242	HB0236

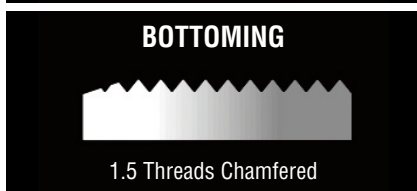
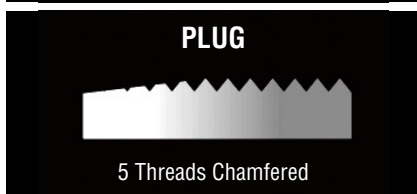
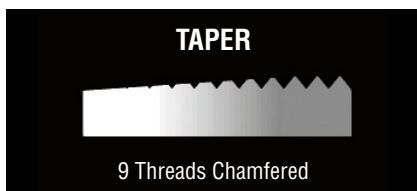
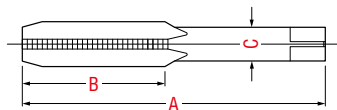
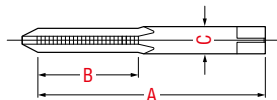
Complete set!!





Asada Taps are made of high quality materials and excellent craftsmanship.

Manufactured from tough Tungsten Steel (SKS).



Nominal Diameter	Pitch Metric (60°)				Length		Shank Diameter (C)
					Overall (A)	Thread (B)	
1.7 mm	0.35 mm				36 mm	13 mm	3 mm
2 mm	0.4 mm				40 mm	15 mm	3 mm
2.3 mm	0.4 mm				42 mm	15 mm	3 mm
2.5 mm	0.45 mm				44 mm	16 mm	3 mm
2.6 mm	0.45 mm				44 mm	16 mm	3 mm
3 mm	0.5 mm	0.6 mm			46 mm	18 mm	4 mm
3.5 mm	0.6 mm				48 mm	18 mm	4 mm
4 mm	0.7 mm	0.75 mm	0.5 mm		52 mm	20 mm	5 mm
4.5 mm	0.75 mm	0.5 mm			55 mm	20 mm	5 mm
5 mm	0.8 mm	0.9 mm	0.5 mm		60 mm	22 mm	5.5 mm
5.5 mm	0.9 mm				60 mm	22 mm	5.5 mm
6 mm	1 mm	0.75 mm	0.5 mm		62 mm	24 mm	6 mm
7 mm	1 mm	0.75 mm			65 mm	26 mm	6.2 mm
8 mm	1.25 mm	1 mm	0.75 mm		70 mm	30 mm	6.2 mm
9 mm	1.25 mm	1 mm	0.75 mm		72 mm	30 mm	7 mm
10 mm	1.5 mm	1.25 mm	1 mm	0.75 mm	75 mm	32 mm	7 mm
11 mm	1.5 mm	1.25 mm			80 mm	38 mm	8 mm
12 mm	1.75 mm	1.5 mm	1.25 mm	1 mm	82 mm	38 mm	8.5 mm
13 mm	1.75 mm	1.5 mm			82 mm	38 mm	9.5 mm
14 mm	2 mm	1.5 mm	1.25 mm	1 mm	88 mm	42 mm	10.5 mm
15 mm	2 mm				88 mm	42 mm	10.5 mm
16 mm	2 mm	1.5 mm	1 mm		95 mm	45 mm	12.5 mm
17 mm	2 mm				95 mm	45 mm	13 mm
18 mm	2.5 mm	2 mm	1.5 mm		100 mm	48 mm	14 mm
19 mm	2.5 mm				100 mm	48 mm	14 mm
20 mm	2.5 mm	2 mm	1.5 mm		105 mm	50 mm	15 mm
22 mm	2.5 mm	2 mm	1.5 mm		115 mm	55 mm	17 mm
24 mm	3 mm	2 mm	1.5 mm		120 mm	58 mm	19 mm
25 mm	3 mm	1.5 mm			120 mm	58 mm	19.5 mm
26 mm	3 mm	2 mm	1.5 mm		125 mm	60 mm	19.5 mm
27 mm	3 mm	2 mm	1.5 mm		130 mm	62 mm	20 mm
28 mm	3 mm	2 mm	1.5 mm		130 mm	62 mm	21.5 mm
30 mm	3.5 mm	3 mm	2 mm	1.5 mm	135 mm	65 mm	23 mm
32 mm	3.5 mm	3 mm	2 mm	1.5 mm	135 mm	65 mm	23 mm
33 mm	3.5 mm	3 mm	2 mm		145 mm	70 mm	25 mm
34 mm	3.5 mm	3 mm	2 mm		145 mm	70 mm	26 mm
35 mm	3.5 mm				145 mm	70 mm	26 mm
36 mm	4 mm	3 mm	2 mm	1.5 mm	155 mm	75 mm	28 mm
38 mm	4 mm	3 mm	2 mm	1.5 mm	155 mm	75 mm	29 mm



Nominal Diameter	T. P. I		Length		Shank Diameter (C)
	BSW (55°)	BSF (55°)	Overall (A)	Thread (B)	
1/16"	60		36mm	13mm	3mm
3/32"	48		42mm	16mm	3mm
1/18"	40		46mm	18mm	4mm
5/32"	32		52mm	20mm	5mm
3/16"	24		60mm	24mm	5.5mm
7/32"	24		61mm	25mm	6mm
1/4"	20	26	62mm	24mm	6mm
5/16"	18	22	70mm	30mm	6.1mm
3/8"	16	20	75mm	35mm	7mm
7/16"	14	18	80mm	38mm	8mm
1/2"	12	16	85mm	42mm	9mm
9/16"	12	16	90mm	42mm	10.5mm
5/8"	11	14	95mm	45mm	12mm
3/4"	10	12	105mm	50mm	14mm
7/8"	9	11	115mm	55mm	17mm
1"	8	10	125mm	60mm	20mm
1 1/8"	7	9	135mm	65mm	22mm
1 1/4"	7	9	145mm	70mm	24mm
1 3/8"	6	8	155mm	75mm	26mm
1 1/2"	6	8	160mm	78mm	30mm

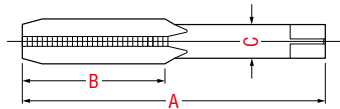
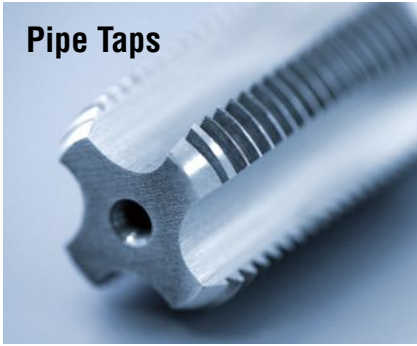
Nominal Diameter	T. P. I		Length		Shank Diameter (C)
	UNC (60°)	UNF (60°)	Overall (A)	Thread (B)	
0		80	34mm	11mm	3.0mm
1	64	72	36mm	13mm	3.0mm
2	56	64	44.5mm	11.1mm	3.0mm
3	48	56	46mm	12.7mm	3.0mm
4	40	48	47.6mm	14.3mm	4.0mm
5	40	44	49.2mm	15.9mm	4.0mm
6	32	40	50.3mm	17.5mm	4.0mm
8	32	36	54mm	19mm	5.0mm
10	24	32	60mm	24mm	5.5mm
12	24	28	60mm	24mm	5.5mm
1/4"	20	28	62mm	24mm	6.0mm
5/16"	18	24	70mm	30mm	6.1mm
3/8"	16	24	75mm	35mm	7.0mm
7/16"	14	20	80mm	38mm	8.0mm
1/2"	13	20	85mm	42mm	9.0mm
9/16"	12	18	90mm	42mm	10.5mm
5/8"	11	18	95mm	45mm	12.0mm
3/4"	10	16	105mm	50mm	14.0mm
7/8"	9	14	115mm	55mm	17.0mm
1"	8	12	125mm	60mm	20.0mm
1 1/8"	7	12	135mm	65mm	22.0mm
1 1/4"	7	12	145mm	70mm	24.0mm
1 3/8"	6	12	155mm	75mm	26.0mm
1 1/2"	6	12	160mm	78mm	30.0mm

Nominal Diameter BA	Length		Shank Diameter (C)
	Overall (A)	Thread (B)	
0 BA	62mm	24mm	6.5mm
1	60mm	22mm	6mm
2	60mm	22mm	5.5mm
3	52mm	20mm	5mm
4	50mm	18mm	4mm
5	50mm	16mm	4mm
6	48mm	15mm	4mm
7	46mm	13mm	4mm
8	44mm	11mm	4mm
9	42mm	10mm	3mm
10	40mm	8mm	3mm

Nominal Diameter	Nominal Diameter Brass (55°)	Length		Shank Diameter (C)
		Overall (A)	Thread (B)	
1/4"	26	63.5mm	25.4mm	6.5mm
5/16"	26	69.85mm	28.6mm	8.8mm
3/8"	26	74.6mm	31.75mm	9.7mm
7/16"	26	76.2mm	31.75mm	8.2mm
1/2"	26	76.2mm	31.75mm	9.32mm
9/16"	26	76.2mm	31.75mm	10.89mm
5/8"	26	76.2mm	31.75mm	12.19mm
3/4"	26	82.55mm	38.1mm	14.89mm
7/8"	26	82.55mm	38.1mm	17.7mm
1"	26	82.55mm	38.1mm	20.32mm



Pipe Taps



Nominal Diameter	T. P. I		Length		Shank Diameter (C)
	BSPT (55°)	BSP (PF)	Overall (A)	Thread (B)	
1/8"	28	28	55mm	19mm	8mm
1/4"	19	19	62mm	28mm	11mm
3/8"	19	19	65mm	28mm	14mm
1/2"	14	14	80mm	35mm	18mm
5/8"	14	14	85mm	35mm	20mm
3/4"	14	14	85mm	35mm	23mm
7/8"	14	14	90mm	40mm	24mm
1"	11	11	95mm	45mm	26mm
1 1/8"	11	11	105mm	45mm	30mm
1 1/4"	11	11	105mm	45mm	32mm
1 3/8"	11	11	110mm	45mm	35mm
1 1/2"	11	11	110mm	45mm	38mm
1 3/4"	11	11	115mm	45mm	40mm
2"	11	11	120mm	50mm	46mm

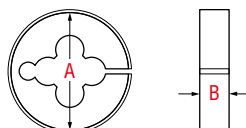
Nominal Diameter	T. P. I		Length		Shank Diameter (C)
	NPT (60°)	NPS	Overall (A)	Thread (B)	
1/16"	27		55mm	17.5mm	6mm
1/8"	27	27	55mm	19mm	8mm
1/4"	18	18	62mm	28mm	11mm
3/8"	18	18	65mm	28mm	14mm
1/2"	14	14	80mm	35mm	18mm
3/4"	14	14	85mm	35mm	23mm
1"	11 1/2	11 1/2	95mm	45mm	26mm
1 1/4"	11 1/2	11 1/2	105mm	45mm	32mm
1 1/2"	11 1/2	11 1/2	110mm	45mm	38mm
2"	11 1/2	11 1/2	120mm	50mm	40mm



Round Dies

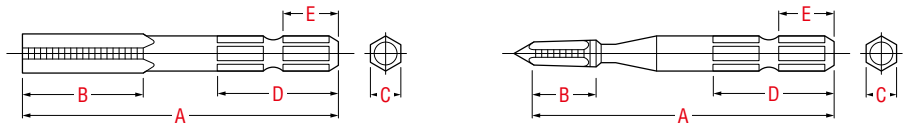
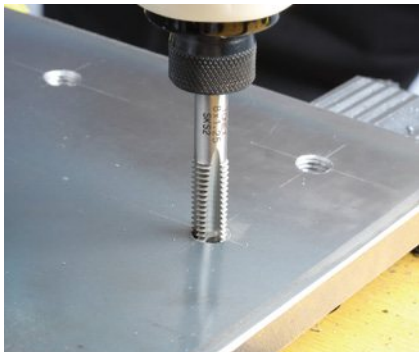


Outside Diameter (A)	Thickness (B)	Metric	UNC / UNF / BSW	BSP / BSPT / NPS / NPT
13/16" (20mm)	7mm	2 ~ 6	3/32 ~ 1/4"	—
1" (25mm)	9mm	2 ~ 10	1/8 ~ 3/8"	—
1 1/2" (38mm)	13mm	5 ~ 20	1/4 ~ 5/8"	1/8 ~ 1/4"
2" (50mm)	16mm	8 ~ 24	3/8 ~ 1"	3/8 ~ 1/2"
2 1/2" (63mm)	20mm	20 ~ 32	3/4 ~ 1 1/4"	1/2 ~ 3/4"
3" (75mm)	25mm	25 ~ 42	7/8 ~ 1 1/2"	3/4 ~ 1 1/4"



Hex Shaft Taps

Fit in Cordless Screwdriver or Air Tool.
Takes only 3 seconds for threading operation.



Nominal Diameter	Pitch	Length				Shank Diameter (C)	Prepared Hole
		Overall (A)	Thread (B)	Shaft (D)	Shaft before groove (E)		
3mm	0.5mm	67mm	15mm	25mm	9.5mm	6.35mm	2.5mm
4mm	0.7mm		18mm				3.3mm
5mm	0.8mm		18mm				4.2mm
6mm	1.0mm		18mm				5.0mm
8mm	1.25mm		26mm				6.8mm

